

2 BEDROOM CORNER SEMI DETACHED HOUSE IN ORCHETA - €165,000

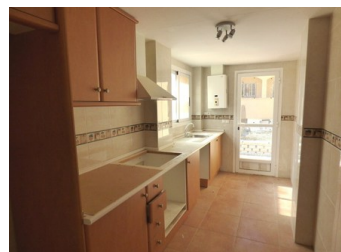
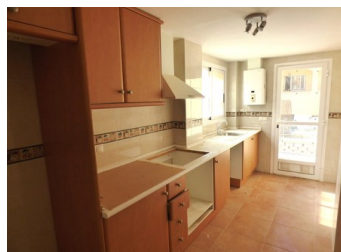
 Bedrooms: 2

 Build: 173m²

 Bathrooms: 1

 Plot: m²

 Ref: CH126B



Property Description

A corner semi-detached house situated in the quiet and peaceful typical Spanish village of Orcheta. Just ten minutes away from the ever popular Benidorm with its famous beaches and tourist attractions, within the village you will find typical local stores and restaurants serving the traditional local food and wine, there is a large reservoir which offers excellent carp fishing as well as other species, all in all the village offers a way of life from yesteryear. The property has 2 large double bedrooms with wardrobes, 1 large complete bathroom, 1 toilet, separate kitchen, living-dining room with fireplace feature, barbecue area, terraces and sun roof, a semi basement of approximately 45m² and private parking with a large private gard...